

**MEMO**

Date: October 2019

To: Senate

From: Julia Denholm, Dean, Lifelong Learning

Re: 2018/2019 Senate Committee on Continuing Studies Annual Report to Senate

For Senate's information, please find enclosed the 2018/2019 Annual Report of the Senate Committee on Continuing Studies.

Within Lifelong Learning, the Continuing Studies area offered over 29 programs and more than 600 courses to over 6,000 students last year. Over 20 professional associations accept our courses and programs for certification and continuing education. The average age of our learners is over 40. Non-credit education continues to serve students of all ages with flexible learning opportunities on nights and weekends and, increasingly, online.

The Senate Committee on Continuing Studies is responsible to review all non-credit certificates and diplomas offered by the University. On behalf of the University, I would like to thank the members of the committee for supporting this important work.

As our [SFU Lifelong Learning Community Report for 2018/2019](#) highlights, your support helps to empower learners, build communities and extend the reach of SFU within Canada and around the world.

Julia Denholm, PhD

Chair, Senate Committee on Continuing Studies

Dean, Lifelong Learning

Simon Fraser University

Senate Committee on Continuing Studies Annual Report to Senate for 2018/2019

Composition and Mandate

The current membership of the Senate Committee on Continuing Studies (SCCS) is the Dean of Lifelong Learning (chair), Dean of Libraries, two faculty members, two at-large members, one convocation member and one student (see Appendix A). The SCCS meets twice each calendar year (fall and spring) and is responsible to advise Senate on policy with respect to the overall development of the University's non-credit certificates and diplomas. The Committee also reviews and approves proposals for non-credit certificates and non-credit diplomas, which includes the establishment of, changes to, and discontinuance of non-credit certificates and non-credit diplomas. The SCCS reports its activities annually to Senate.

Actions of the SCCS in Academic Year 2018/2019

The Senate Committee on Continuing Studies met on October 9, 2018 and May 3, 2019

At the Fall 2018 meeting the Committee

- approved revisions to the Non-Profit Management Certificate
- approved revisions to the Editing Certificate
- approved revisions to the Community Economic Development Certificate
- approved a Community Data Science Certificate
- ratified the Annual Report to Senate for 2017/2018
- approved 324 non-credit certificate and diploma graduates

At the Spring 2019 meeting the Committee:

- approved course name change in the Dialogue and Civic Engagement Certificate to reflect current practice (Aboriginal to Indigenous)
- received for information suspension of admission to the following:
 - Legal Interpretation and Translation Certificate (Punjabi/English)
 - Medical Translation and Interpretation Certificate (Punjabi/English)
 - Next Generation Transportation Certificate
 - New Media Journalism Certificate
 - Craft Beer Brewing Essentials Certificate
- approved 342 non-credit certificate and diploma graduates

Total enrollments in Lifelong Learning's credit and non-credit courses are provided in Appendix B.

Appendix A

Senate Committee on Continuing Studies, 2018 - 2019 Members

Lyn Bartram, Faculty Senator

Gwen Bird, Librarian

Lara Campbell, Faculty Member

Winfield Chen, Student

Julia Denholm, Lifelong Learning (Chair)

Tracey Leacock, Convocation Senator

Gaëlle Planchenault, Faculty Senator

Suzanne Smythe, Faculty Member

Appendix B
Lifelong Learning Enrollment, Fiscal Year 2018/2019

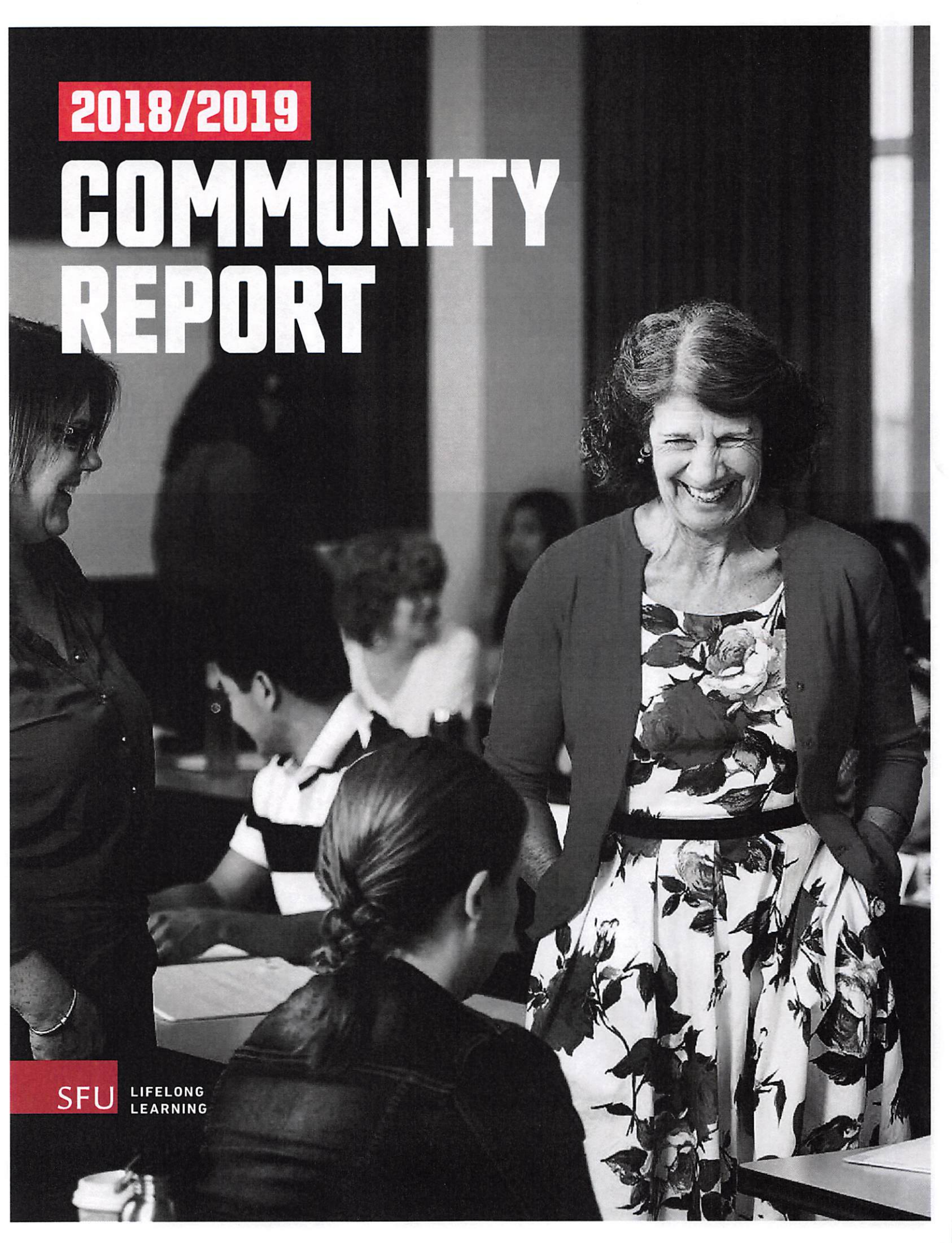
In cooperation with SFU faculties and departments, the Lifelong Learning (LL) Unit offered part-time degree completion and online and distance education in addition to continuing education programs. LL also engaged the community through a variety of learning and growth opportunities.

PROGRAM	FEE-BASED REGISTRATIONS	FREE and SPONSORED REGISTRATIONS
CAREER AND PROFESSIONAL PROGRAMS	5,840	-
CITY PROGRAM	349	2,265
CREATIVE WRITING PROGRAM	800	1,677
ENGLISH LANGUAGE AND CULTURE PROGRAM	801	-
INTERNATIONAL TEACHING ASSISTANTS PROGRAM	60	-
INTERPRETATION AND TRANSLATION PROGRAM	331	-
LEADERSHIP AND COMMUNITY BUILDING PROGRAMS	819	1,997
LIBERAL ARTS AND 55+ PROGRAMS	6,024	1,523
PHILOSOPHERS' CAFÉ	-	3,272
SFU NOW (NIGHTS or WEEKENDS)	2,350	-
TOTAL CREDIT AND NON-CREDIT ENROLLMENT	17,374	10,734

2018/2019

COMMUNITY REPORT

SFU LIFELONG
LEARNING



SINCE 1971, LIFELONG LEARNING HAS DELIVERED FLEXIBLE EDUCATION

that extends the accessibility and reach of
Simon Fraser University within Canada
and around the world.

SFU acknowledges the Squamish, Musqueam, Tsleil-Waututh, Katzie and Kwikwetlem peoples on whose traditional territories our three campuses stand.



CONTENTS

- 1**
MESSAGE FROM THE DEAN
- 2**
BUILDING ENGAGED COMMUNITIES
- 6**
EMPOWERING LEARNERS FOR LIFE
- 10**
LIFELONG LEARNING PROGRAMS
- 12**
FINANCIALS
- 14**
ENDOWMENTS
- 16**
ADVISORY COMMITTEES

MESSAGE FROM THE DEAN

When I joined SFU Lifelong Learning in July 2018, I was struck by the sense of community here. I work alongside exceptional people who come together from different sectors, disciplines and geographies to develop and deliver a progressive curriculum. Our instructors and staff are passionate about working collaboratively to offer relevant and high-demand programs.

Lifelong Learning, both as a unit and a pursuit, is critical for the future. It delivers ongoing skills development to people who must keep pace with changing social, economic and environmental realities. This year we realized 10 percent growth in fee-based non-credit registrations while also reviewing our approaches to ensure that we remain innovative and responsive. Our programming focuses on teaching practical skills as well as developing flexible, creative thinkers who will excel in the jobs of the future.

We're excited both to celebrate our achievements this year and reflect on why we pursue them. Our learners are at the heart of our efforts. They come from different age groups, locations and backgrounds, and what they find at Lifelong Learning goes beyond a credential. They find the resources, mentorship and encouragement that help them pursue their goals.

We're grateful to our community and academic partners for their support, enthusiasm and ideas and know that together we can continue to build engaged communities and empower learners for life.

Sincerely,

Julia Denholm, PhD
Dean, Lifelong Learning

BUILDING ENGAGED COMMUNITIES

Community engagement has always been central to Lifelong Learning's mandate. We are a front-facing pillar of the university, with low- and no-cost community initiatives as well as forward-thinking programming that supports public engagement, community building and leadership in the public, private and non-profit spheres.

BRINGING COMMUNITY BUILDERS TOGETHER

We have designed programming that leverages deep community expertise. Our certificates and courses bring leading practitioners into the classroom to nurture new and established professionals in such areas as social innovation, public engagement and urban planning. We're committed to principles of reconciliation as well as equity, diversity and inclusion.

Our programs employ a practical, project-based approach that helps participants accomplish tangible goals. Learners bring their experience into the classroom and apply their learning to specific projects and programs that have an immediate social impact.





“We did everything by ourselves in our first five years— but to actually get larger, we need to do everything together as a community.”

—PHILIP AGUIRRE, Community Capacity Building Student

A customized program in community capacity building helped Surrey’s business improvement associations and chambers of commerce work together to strengthen their communities. A new mural laneway is part of the Newton revitalization plan developed by Philip Aguirre (far left), executive director of the Newton Business Improvement Association.



**“I didn’t realize that
what I was already
doing was social
innovation.”**

—SALLY KUPP, Social Innovation
Certificate Student

REACHING ACROSS THE LOWER MAINLAND AND BEYOND

With 10,734 free and sponsored event registrations this year, our community outreach continued to thrive. From a festival on creativity and aging to community workshops for writers, we attracted participants from across the Lower Mainland. We also met learners where they are, with more than 1,900 youth, adults and older adults benefiting from Tech Cafés hosted at seven locations in the Downtown Eastside several times a month.

The Philosophers' Café also continued to bring citizen engagement to multiple communities through small-venue discussion forums. This year, The Writer's Studio and Philosophers' Café each grew free and sponsored registrations by more than 30 percent over last year.

ENHANCING THE LEARNER EXPERIENCE

For Lifelong Learning, engagement goes beyond hosting public events. It's baked into our everyday practices and programming. Our 415 instructors bring years of experience into the classroom, as well as taking learning insights back into their practices. Through our programs, learners discover a network of peers and mentors who help support their goals. Lifelong Learning staff also offer support to participants before, during and after their learning.

The Street Degree in Overdose Prevention program has trained some 350 peers—current and former drug users—to work at overdose-prevention and harm-reduction sites in Vancouver. Through the social innovation program, Street Degree co-creator Sally Kupp learned about scaling operations and worked with an executive coach.



EMPOWERING LEARNERS FOR LIFE

Our learners' goals are as diverse as our learners themselves. They want to start new careers, help their communities, publish books or get promotions. Our international learners want to experience Canadian culture and ready themselves for the rigours of university. Liberal Arts and 55+ learners relish the opportunity to take intellectually stimulating classes and meet like-minded peers.

DEVELOPING THE RANGE OF SKILLS EMPLOYERS NEED

Our programs are designed to address both the practical skills employers want and the “soft” or human competencies that support creativity, collaboration and innovation.

Through our courses, learners can discover authentic approaches to leadership and creative methods of public engagement as well as the fundamentals of accounting, procurement management and cost-benefit models.



“The emphasis wasn’t just on graduating, it was also on helping us launch our PR careers. The teachers and staff were (and still are) our biggest cheerleaders.”

—ALLIE DARWIN, PUBLIC RELATIONS CERTIFICATE GRADUATE


A new HR career in health care allowed Trish Ashbee (far right) to regain her work-life balance after 22 years in the hospitality industry. She felt well supported by instructors like Leila Rahemtulla (right), who encouraged Trish to explore industries beyond hospitality.





“It opened so many doors I didn’t even know were possible. I wouldn’t have these opportunities if I hadn’t done the program.”

**—TRISH ASHBEE, Human Resources
Management Certificate Graduate**



“We had discussions about life, and things like that. It’s cool.... I’ve found a lot of friends.”

—**KIAVASH KAZEROONI**, English Language and Culture Program Student

Kiavash Kazerooni (above) completed the English Language and Culture Program (ELC) and is now attending Fraser International College to prepare for admission into SFU. He appreciates the effort that ELC student support assistant Tracy Lim (right) put into organizing a wide range of activities for all the students.

CREATING MEANINGFUL CONNECTIONS

This year, we awarded 634 certificates or diplomas to motivated learners who are now SFU alumni. More than that, we connected learners across the country with cohorts, mentors and networks of support that will continue to help them achieve their goals.

Whether through the hands-on work of a practicum or the insightful advice of an instructor, our learners receive more than a certificate. Our programs help open doors that can dramatically change people's lives.

SFU'S LIFELONG LEARNING COMMUNITY

6,422

LEARNERS

415

INSTRUCTORS



“The general culture in the program was so supportive. The instructors were always approachable with any questions we had, and they had practical experience in the field.... I was studying with like-minded people who were passionate about the field.”

—NATALIE PASHUTINA, OCCUPATIONAL
HEALTH AND SAFETY DIPLOMA GRADUATE

LIFELONG LEARNING PROGRAMS

Through more than two dozen programs and hundreds of unique courses, we help learners of all ages succeed in a fast-changing world.

FOR NEW AND MID-CAREER PROFESSIONALS

Business and Management

Business analysis
Business management
Craft beer and brewing essentials
Career development
practitioner training
Human resources management
Non-profit management
Project management
Public company governance
Risk management
Supply chain management

Communication

Editing
Plain language
Public relations
Technical communication

Health and Wellness

End-of-life studies
First responders
trauma prevention and recovery
Occupational health and safety
Rehabilitation and
disability management

Leadership and Community Building

Community capacity building
Dialogue and civic engagement
Evaluation
Executive leadership
Next-generation transportation
Non-profit management
Restorative justice
Social innovation
Urban design
Urban planning

Interpretation and Translation

Japanese/English
Mandarin Chinese/English

FOR INTERNATIONAL LEARNERS

English Language and Culture

FOR SFU DEGREE SEEKERS

SFU NOW: Nights or Weekends

FOR ALL LIFELONG LEARNERS

Creative Writing: The Writer's Studio
Liberal Arts and 55+
Philosophers' Café

INTERNATIONAL ONLINE LEARNERS



2018/2019 ENROLLMENT

CREDIT	Fee-based registrations	Free and sponsored registrations
SFU NOW: Nights or Weekends	2,350	
NON-CREDIT		
Business and Management	3,132	
Communication	2,095	
Health and Wellness	613	
Leadership and Community Building	1,168	4,262
Interpretation and Translation	391	
English Language and Culture	801	
Creative Writing	800	1,677
Liberal Arts and 55+	6,024	1,523
Philosophers' Café		3,272
Total	17,374	10,734

WHAT WE OFFER

379

UNIQUE COURSES

WHERE WE LEARN

58%

SFU'S VANCOUVER CAMPUS

15%

SFU'S SURREY CAMPUS

27%

ONLINE

FINANCIALS

We completed the year 2018/2019 in good financial standing, due in large part to higher-than-expected enrollments in programs, namely Liberal Arts and 55+, and English Language and Culture. This year we also made a \$300,000 contribution to SFU's First Peoples' Gathering House, which will provide a shared space for Aboriginal students, staff and community and foster greater understanding of Aboriginal peoples and culture.

YEAR ENDING MARCH 31, 2019

Table 1: Unaudited Condensed Financial Statement

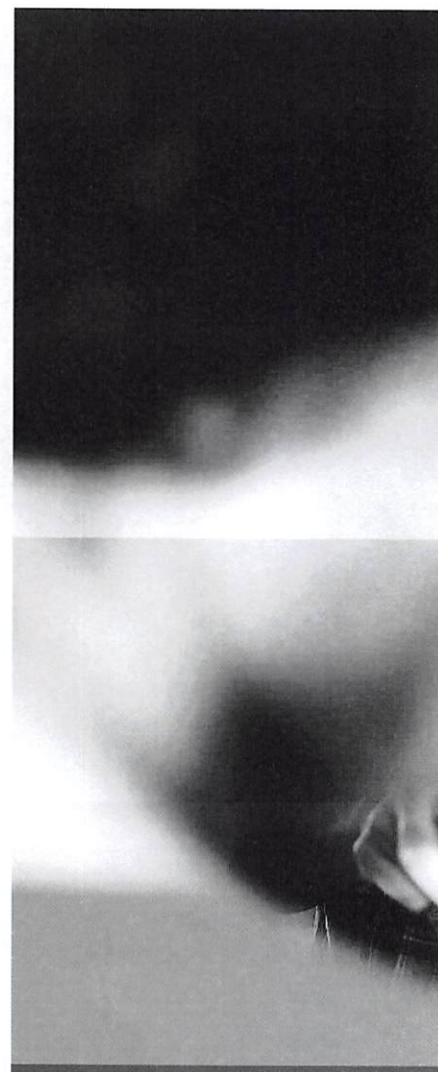
Revenue	2018/2019 Budget	2018/2019 Actuals	Variance
Board-Approved Funding	\$4,712,302	\$4,721,966	\$9,659
Non-Credit and Other Revenues	\$8,239,460	\$8,594,052	\$354,592
Total Revenues	\$12,951,767	\$13,316,018	\$364,251
Total Expenses	\$12,951,767	\$13,246,686	(\$294,920)
Surplus/(Deficit)	\$0	\$69,331	\$69,331

Table 2: Credit enrollment

Program	Tuition Fees
Integrated Credit Studies	\$8,092,635
SFU NOW: Nights or Weekends	\$2,375,930
Total	\$10,468,565

Table 3: Space and equipment rentals

Location	Rent Paid
SFU's Vancouver Campus—variable classroom space	\$328,952
SFU's Vancouver Campus—fixed office space	\$85,332
SFU's Surrey Campus—fixed rent	\$145,000
Audio Visual Equipment—variable	\$204,441
Total Paid to University	\$763,725





CONTRIBUTIONS TO THE COMMUNITY

We invested significant resources in supporting SFU's vision of community engagement by delivering hundreds of no-cost events to more than 10,000 registrants at SFU campuses and across the Lower Mainland. We also help the university maintain and expand its community connections through education partnerships, practicum placements and advisory committees.

CONTRIBUTIONS TO THE UNIVERSITY

This year we liaised with more than 30 academic departments to make more than 200 undergraduate courses available to students in the Harbour Centre building at SFU's Vancouver campus. We schedule classes and exams as well as provide administrative assistance and office space to instructors. We also offer almost 100 courses at both Surrey and Vancouver through SFU NOW: Nights or Weekends. In supporting this activity, we have indirectly contributed more than \$10 million in tuition fees (see table 2). We also make financial contributions to the university through payments for space and equipment rental, which this year totaled \$763,725 (see table 3).



"My cohort inspired me, challenged me and helped me learn. The mentors are prolific writers and the most generous teachers I've ever had."

**—CARYS CRAGG, CREATIVE WRITING
CERTIFICATE GRADUATE**



The generosity of the community supports the quality and quantity of Lifelong Learning initiatives. We are grateful to the donors who enable programming and activities throughout the year.

SALVATION ARMY DEVELOPMENT ENDOWMENT FUND

Established in 1989 by a gift from the late Dr. J.L. Wighton, this \$3.7-million fund helps Salvation Army officers and staff pursue advanced educational opportunities. This fund is administered by the Lifelong Learning Leadership and Community Building program.

In 2018/2019, this fund supported the development of the Applied Leadership Certificate at Booth University College, as well as the opportunity for Salvation Army officers, staff and nominees to build skills through a variety of educational initiatives.

DAVID AND CECILIA TING ENDOWMENT FOR EDUCATION FOR PUBLIC RESPONSIBILITY

The \$1.2-million Ting endowment supports an annual lecture or seminar in public affairs education or leadership development, as well as Lifelong Learning's Interpretation and Translation program.

In 2018/2019, these funds enabled the Creative Commotion: Creativity and Aging Festival, which attracted more than 180 participants, as well as the Don't Engage the Public Before You've Answered These Six Questions workshop, which attracted more than 60 participants.

COMMUNITY PARTNERSHIP FUND

The partnership fund helps communities and low-income individuals in East Vancouver, the Downtown Eastside and other inner-city communities attain opportunities to become economically self-sufficient.

This year, the fund supported Tech Cafés, or enhanced digital literacy workshops, in Vancouver's Downtown Eastside. Weekly cafés in seven different locations taught computer skills to youth, adults, older adults, Indigenous peoples, newcomers and immigrants, including Mandarin and Cantonese speakers. Approximately 1,900 people gained technical experience through these workshops this year.

THE CITY PROGRAM ENDOWMENT FUND

In 1995, this \$1.9-million fund was established through a lead grant from the Real Estate Foundation of British Columbia and subsequent grants from the Earl and Jennie Lohn Foundation; VIA Architecture, Inc.; and the Ministry of Community, Aboriginal and Women's Services. The endowment supported Community Data Science curriculum development this year.

SENIORS PROGRAM ENDOWMENT FUND

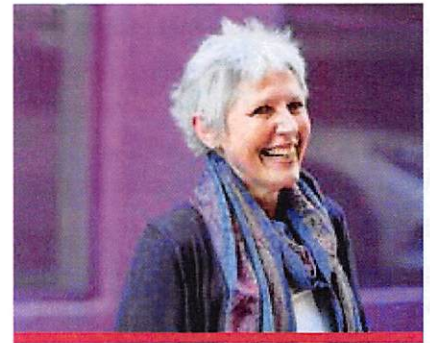
Members of the SFU Opsimath Club (Seniors Lifelong Learners Society) established a \$290,000 fund in 2000 to support program operations and ensure that course offerings for adults 55+ continue to thrive.

SENIORS PROGRAM DIRECTORS ENDOWMENT FUND

In 2010, a generous \$4.6-million bequest from the late Alan Aberbach established this fund to support staff salaries and related 55+ program administrative activities and help ensure the sustainability and growth of courses for adults 55+.

THE ANNIE WATSON BURSARY FUND

The family of the late Annie Watson, a learner in our 55+ program, helped to create a fund in 2011 to provide financial support for those who would not otherwise be able to participate in the program. In 2018/2019, 29 learners benefited from the bursary, for a total of 53 registrations.



“The quality of thoughtful engagement, the shared interest in new ideas and the sheer enthusiasm make both teaching and being a participant treasured sources of connection and community for me.”

—MONICA FRANZ, LIBERAL ARTS
CERTIFICATE FOR 55+ (NON-CREDIT) GRADUATE

ADVISORY COMMITTEES

Thank you to the experts on our advisory committees who contributed their knowledge and advice this year. Your commitment ensures that our programming retains its quality, academic integrity and continued relevance.

CAREER AND PROFESSIONAL PROGRAMS

Writing and Communication Advisory Committee

ELLEN ASHDOWN, Knowledge and Content Manager, Strategic Solutions Manager, Traction University

SHAWN CONNER, Journalist, Copywriter

NATASHA NETSCHAY DAVIES, Co-Founder, Moonraker Media

ROMA ILNYCKYJ, Content Editor, Chartered Professional Accountants of Canada

VESNA MALJKOVIC (Chair), Associate Director, Career and Professional Programs

FAWN MULCAHY, Senior Manager, Sponsorship Marketing, Royal Bank

LANA OKERLUND, Editor and Partner, West Coast Editorial Associates LLP

ELIZABETH RAINS, Editor and Columnist, Coast Reporter

RENÉE SAKLIKAR, Independent Writing and Editing Professional; Poet Laureate, City of Surrey

RICHARD SMITH, Director, Master of Digital Media Program

CHERYL STEPHENS, Co-Founder, Plain Language Association International

HEIDI TURNER, B2B Writer and Content Marketer

CITY PROGRAM

Community Data Science Certificate Advisory Committee

LYN BARTRAM, Professor, School of Interactive Arts and Technology; Director, Vancouver Institute of Visual Analytics

ERIC BOND, Manager, Market Analysis, Canadian Housing and Mortgage Corporation, Vancouver Division

CLAIRE GRAM, Policy and Projects Lead, Population Health, Vancouver Coastal Health

PENNY GURSTEIN, Professor and Past Director, School of Community and Regional Planning, UBC

PETER HALL, Professor, Urban Studies and Geography

INGRID HWANG, Planner, Citywide and Regional Planning, City of Vancouver

CRAIG E. JONES (Chair), Research Coordinator, UBC Housing Research Collaborative

PHIL MONDOR, Principal, Phil Mondor ReZoning Advisor

MARTIN MONKMAN, Provincial Statistician and Director, BC Stats

JAMES RAYMOND, Manager, Research and Analysis, Vancouver Economic Commission

PAUL RAYNOR, Planner, City of Vancouver (Retired)

JEFF TISDALE, Chief Executive Officer, Landcor Data Corporation

WENDY WATERS, Senior Director, Research Services and Strategy, GWL Realty Advisors

STEPHEN WU, Manager, Economic Development, City of Surrey

HEATHER WYLIE, Advisor, Statistics Canada

ELVIN WYLY, Professor, Urban Studies and Geography, UBC

ENGLISH LANGUAGE AND CULTURE PROGRAM

Advisory Committee

KATIE GRAHAM, Immigrant Services Society of BC;
Manager, Language College–LINC

BERTRAND LEE (Chair), Director, English Language
and Culture Program

SHARLA REID, Director and Principal,
Fraser International College

JUDY SHABTAI, Program Coordinator,
English Language and Culture Program

JACQUIE SINCLAIR, Marketing Coordinator,
English Language and Culture Program

JUDY SMITH, Associate Dean, Lifelong Learning

GEOFF TAYLOR, Instructional Coordinator,
English Language and Culture Program

INTERPRETATION AND TRANSLATION PROGRAMS

Interpretation and Translation Advisory Committee

STEVEN CHANG, Interpretation and Translation
Program Alumnus

CINDY CHENG, Interpreter, Immigration and Refugee Board

WINNIE CHIANG, Instructor Emeritus,
Interpretation and Translation Program

TIFFANY LEE, Regional Coordinator,
Vancouver Law Courts, Justice Education

WYN ROBERTS, Professor Emeritus,
Department of Linguistics

WENDY STEINBERG (Chair), Director,
Interpretation and Translation Program

Medical Translation and Healthcare Interpretation Advisory Committee

NAOMI ARMSTRONG, Manager, BC Community
Partnerships Program, Canadian Red Cross

IVONA KADO, Manager, Interpretation and Translation
Services, Abbotsford Community Services

JAMES KUO, MD, Interpreter and Translator,
Abbotsford Community Services

KIRAN MALLI, Director, Provincial Language Services

WENDY STEINBERG (Chair), Director,
Interpretation and Translation Program

LEADERSHIP AND COMMUNITY BUILDING PROGRAMS

Dialogue and Civic Engagement Certificate Advisory Committee

JOANNA ASHWORTH, Director, Professional Programs
and Partnerships, Faculty of Environment

PETER BOOTHROYD, Professor Emeritus, School of
Community and Regional Planning, UBC

ASLAM BULBULIA, Community Engagement and
Facilitation, Centre for Comparative Muslim Studies;
Fellowship Co-Host, RADIUS

CHRIS CORRIGAN, Facilitation Consultant

RAIN DANIELS, Consultant, Facilitator,
Indigenous Cultural Competency

ROBERT DAUM, Fellow and Lead, Diversity and Innovation,
Senior Consultant, Morris J. Wosk Centre for Dialogue

JUNE FRANCIS, Associate Professor, Marketing;
Director, Sustainable Development Program, Faculty
of Environment; Director, Institute for Diaspora
Research and Engagement; Co-Lead, CIRDI-funded
Co-Laboratorio Perú

JULIAN GRIGGS, Principal, Dovetail Consulting; Associate,
Morris J. Wosk Centre for Dialogue

SUSANNA HAAS LYONS, Public Engagement Specialist;
Associate, Morris J. Wosk Centre for Dialogue

SARAH HAY, Founder, Slow and Steady Design;
Director, Vancouver Design Nerds Society; Instructor,
Emily Carr University

PARKER JOHNSON, Organizational Effectiveness
Consultant in Justice, Diversity, Equity, Inclusion

IMOGENE LIM, Professor, Anthropology,
Vancouver Island University

JENNIFER REDDY (Chair), Associate Director, Leadership
and Community Building Programs

BALDWIN WONG, Multicultural Social Planner,
City of Vancouver

Evaluation for Social Change and Transformational Learning Certificate Advisory Committee

SHANTHI BESSO (Chair), Director, Leadership
and Community Building Programs

MARK CABAJ, Principal, Here to There Consulting

KRISTY HOYAK, Evaluation Consultant; Learning and Implementation Analyst, Transformational Learning Team, Vancouver Coastal Health Authority

KYLIE HUTCHINSON, Principal, Community Solutions Consulting

ROBERTA PRICE, Elder, Snuneymuxw and Cowichan First Nations

MICHAEL QUINN PATTON, Author, Organizational Development and Evaluation Consultant; Former President, American Evaluation Association

RON ROESCH, Professor, Psychology Department

BILLIE JOE ROGERS, Research Associate, Reciprocal Consulting

WENDY ROWE, Professor, Leadership Studies; Director, MA in Global Leadership, Royal Roads University

MARIKA SANDRELLI, Regional Trauma Informed Practice Leader, Mental Health and Substance Use Services, Fraser Health Authority

DANIEL SAVAS, Adjunct Professor, School of Public Policy

MALCOLM STEINBERG, Clinical Assistant Professor, Faculty of Health Sciences; Program Director, Public Health Practice; Chair, Master of Public Health Program

KATE SUTHERLAND, Social Entrepreneur, Organizational Development Consultant; Founding Faculty, THNK School of Creative Leadership

SAMANTHA TSURUDA, Research Associate, Reciprocal Consulting

KIM VAN DER WOERD, Principal, Reciprocal Consulting

CINDY XIN, Educational Consultant, Teaching and Learning Centre; Adjunct Professor, Faculty of Education

*Non-Profit Management Certificate
Advisory Committee*

JENNIFER BREAKSPEAR, Principal, Breakspear Leadership and Training

ALISON BREWIN, Executive Director, Vantage Point

KATHLEEN BURKE, Senior Lecturer, Beedie School of Business

MARK GIFFORD, Executive Director, Kiwassa Neighbourhood House

OLIVER HAMILTON, Associate Counsel, Severide Law

PAMELA HOLLINGTON, Principal, Rebound Consulting

GLENDIA MORRIS, Consultant, Human Resource Management Professional

LAURIE PARSONS, Executive Director, Ishtar Society

JENNIFER REDDY (Chair), Associate Director, Leadership and Community Building Programs

JORGE SALAZAR, Director, Inner Activist

MARIKA SANDRELLI, Regional Trauma Informed Practice Leader, Mental Health and Substance Use Services, Fraser Health Authority

PAUL TAYLOR, Executive Director, FoodShare

*Restorative Justice Certificate
Advisory Committee*

MARTHA BROWN, Adjunct Professor, Florida Atlantic University

KRYSTAL GLOWATSKI, PhD Candidate, School of Criminology

BRENDA MORRISON, Associate Professor, School of Criminology; Director, Centre for Restorative Justice

JENNIFER REDDY (Chair), Associate Director, Leadership and Community Building Programs

*Social Innovation Certificate
Advisory Committee*

JOANNA ASHWORTH, Director, Professional Programs and Partnerships, Faculty of Environment

SHANTHI BESSO (Chair), Director, Leadership and Community Building Programs

TIM DRAIMIN, Executive Director, Social Innovation Generation (SiG) National

AL ETMANSKI, Faculty, John McKnight's Asset-Based Community Development Institute (ABCD); Co-Founder, Planned Lifetime Advocacy Network (PLAN); Ashoka Fellow

TATIANA FRASER, Co-Founder and Past Executive Director, Girls Action Foundation

LISA GIBSON, Director, Living in Community

JULIAN GONZALES, Consultant, Facilitator, Educator

AM JOHAL, Director, Community Engagement, Vancity Office of Community Engagement

DAVID LEPAGE, Principal, Accelerating Social Impact CCC, Ltd. (ASII); Chair, Social Enterprise Council of Canada

SARAH LUBIK, Lecturer, Innovation and Entrepreneurship, Beedie School of Business; Director, Entrepreneurship

ANDREA REIMER, Former Deputy Mayor, City of Vancouver; 2019 Loeb Fellow, Harvard University

DARCY RIDDELL, Director, Strategic Learning, J.W. McConnell Family Foundation

CHERYL ROSE, Associate Director, Banff Centre for Arts and Creativity; Senior Fellow, McConnell Foundation

SHAWN SMITH, Adjunct Professor, Founding Director, RADIUS, Beedie School of Business

KATE SUTHERLAND, Social Entrepreneur, Organizational Development Consultant; Founding Faculty, THINK School of Creative Leadership

DELYSE SYLVESTER, President, Social Currents; Co-Designer, Sustainability Leadership Labs; Executive in Residence, Beedie School of Business

The Writer's Studio Advisory Committee

ANDREW CHESHAM (Chair), Associate Director, Creative Writing Program

STEPHEN COLLIS, Professor, Department of English

JEN CURRIN, Creative Writing Instructor, Kwantlen Polytechnic University; Former Writer's Studio Mentor

JÓNÍNA KIRTON, Writer's Studio Graduate and Author; Writer's Studio Aboriginal Advisory Committee Member; Former Writer's Studio Aboriginal Liaison

HAL WAKE, Former Artistic Director, Vancouver International Writers Festival

JOHN WHATLEY, Managing Editor, SFU Publications

LIFELONG LEARNING

Endowment Committee

JULIA DENHOLM (Chair), Dean, Lifelong Learning

GLORIA GUTMAN, Professor Emeritus, Department of Gerontology

VESELIN JUNGIC, Professor, Department of Mathematics

ROZ KAPLAN, Program Director, Liberal Arts and 55+ Program

VESNA MALJKOVIC, Associate Director, Career and Professional Programs

RAVEEN SANGHERA, Associate Director, Career and Professional Programs

JUDY SMITH, Associate Dean, Lifelong Learning

Senate Committee on Continuing Studies

LYN BARTRAM, Faculty Senator; Associate Professor, School of Interactive Arts and Technology

GWEN BIRD, University Librarian, Dean of Library Services

LARA CAMPBELL, Faculty Member; Professor and Department Chair, Department of Gender, Sexuality and Women's Studies

WINFIELD CHEN, Student

JULIA DENHOLM (Chair), Dean, Lifelong Learning

TRACEY LEACOCK, Convocation Senator; Adjunct Professor, Faculty of Education

GAËLLE PLANCHENAUT, Faculty Senator; Associate Professor, Department of French

SUZANNE SMYTHE, Faculty Member; Associate Professor, Faculty of Education

PHOTO CREDITS

Greg Ehlers: cover, pages 1,2,3,4,5,6,7,8,13,14,15

Laura Kelly Photography: page 6

Bernice Puzon: page 9



“Adult learning and education is learner-centred and able to mobilise learners not as mere recipients of knowledge, but as agents of change in their own lives and in their communities.”

— *Youth and Adult Education in the Agenda 2030*
DVV International, 2019

CANADA'S ENGAGED UNIVERSITY

SFU LIFELONG LEARNING
515 West Hastings Street
Vancouver, British Columbia
Canada V6B 5K3
sfu.ca/lifelong-learning

