

**2019/2020 Undergraduate Enrolment Summary and  
2020/2021 SFU Enrolment Plan**

*for*

**Senate March 2, 2020**

**Senate Committee on Enrolment Management and Planning (SCEMP)**

Prepared by  
Zareen Naqvi, Director  
Institutional Research and Planning  
February 11, 2020

This report summarizes the undergraduate enrolment outcomes of fiscal year 2019/20 and the proposed enrolment plan for 2020/21. A brief description of the terms used in the enrolment plan is given below:

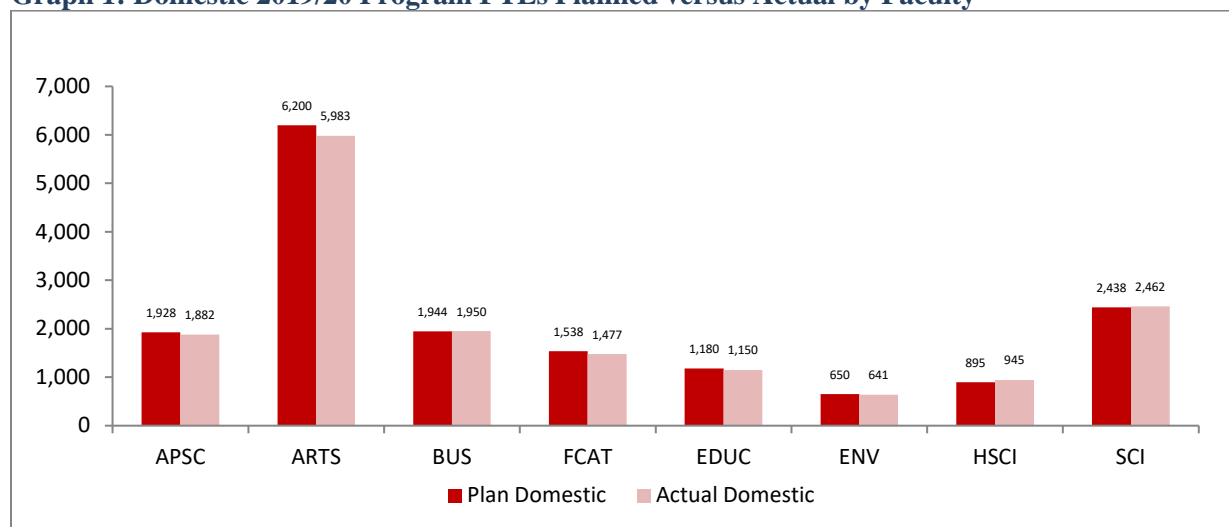
- **PFTE:** An undergraduate program FTE (PFTE) is calculated by accumulating all undergraduate units taken by all students in each undergraduate program and dividing by the applicable full-time load for each program.
- **AFTE:** An activity FTE (AFTE) for a Faculty is calculated by multiplying the number of units for every course offered by the Faculty by the number of students in every course and dividing by 30.
- **COOP:** a Co-op term is defined as a full load for the purpose of counting undergraduate FTEs starting in 2011/12. This definition is consistent with other research universities. The definition of Co-op as full-time was already in effect for graduate students starting 2010/11.

## 2019/2020 Enrolment Outcomes

### *Funded Domestic<sup>1</sup> Program FTEs (PFTEs):*

Program FTEs are dependent on retention of existing students, student credit load, recruitment of new students and the number of students graduating. SFU was funded for **17,074** undergraduate full-time equivalents (PFTE) in 2019/20 including Co-op FTEs and 80 new FTEs for the Sustainable Energy Engineering program based in Surrey. Our PFTEs were **17,894** a surplus of **4.8%** (820) above the Ministry’s funded PFTEs. Our enrollment planning is done in terms of program FTEs excluding Co-op. We had **16,498** domestic undergraduate PFTEs this year (excluding Co-op), slightly below our enrolment plan. Graph 1 compares the 2019/20 program FTE plan versus actuals for SFU faculties.

**Graph 1: Domestic 2019/20 Program FTEs Planned versus Actual by Faculty**



**New Domestic Student Intake:** We admitted **4,710** new students which represented **87%** of our new domestic intake target. (See Table 1 for 2019/20 Senate Approved Plan for undergraduate domestic full

<sup>1</sup> For the purposes of this report (undergraduate headcount, PFTEs, AFTEs), a domestic student is defined as someone paying the domestic tuition rate and an international student is defined as someone paying the international tuition rate. These numbers may differ from other reports (for example, the Enrolment Portal) where domestic/international differentiation is based on visa status.

time equivalent enrolments versus actuals and new intake targets versus actuals by Faculty). Despite some Faculties missing their domestic intake targets most came close to their PFTE targets. However, a trend we are seeing continues to be a softening of domestic numbers. In 2019/20 there was an additional impact on enrolment of new students due to the new faculty-specific admission requirements for B.C. high schools beginning in fall 2019; this impact is likely to continue for a couple of transition years but some adjustments are being made to minimize the impact.

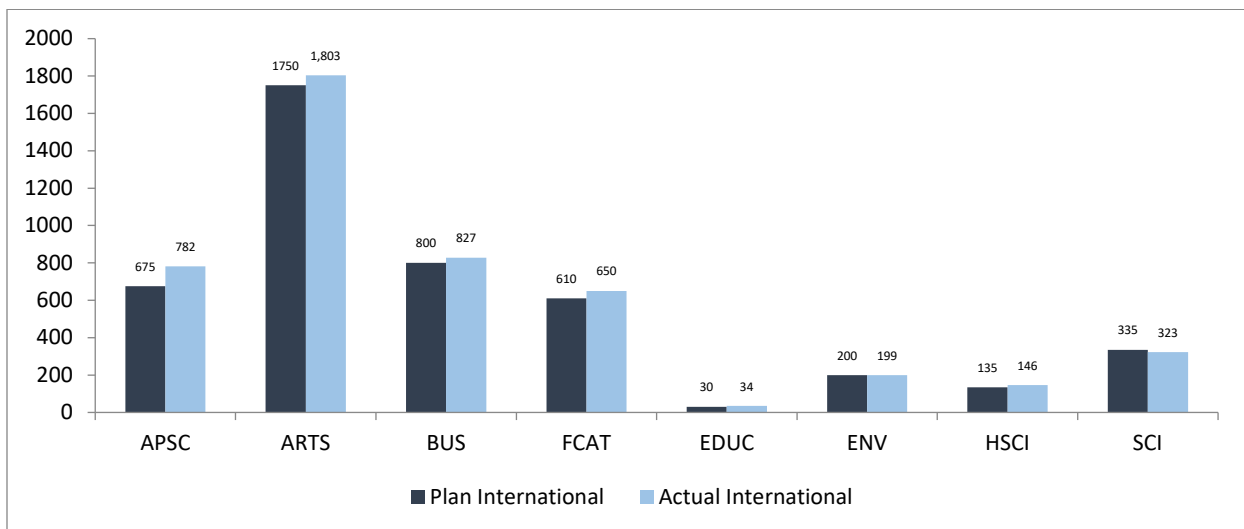
**Table 1: Domestic 2019/20 Enrolments and New Student Intakes by Faculty**

Faculty	Program Full Time Equivalent Enrolments (PFTEs)		New Student Intake (Headcount)	
	Plan	Actual	Plan	Actual
APSC	1,928	1,882	641	536
ARTS	6,200	5,983	2,413	1,928
BUS	1,944	1,950	480	428
FCAT	1,538	1,477	420	337
EDUC	1,180	1,150	231	299
ENV	650	641	199	166
HSCI	895	945	280	297
SCI	2,438	2,462	750	717
USPEC*	0	8	0	3
<b>SFU Total</b>	<b>16,773</b>	<b>16,498</b>	<b>5,414</b>	<b>4,710</b>

\* USPEC= unspecified

**International Program FTEs and New International Student Intake:** International student enrolment was **4,765** PFTEs which equals **22.4%** of total undergraduate student PFTEs. See Graph 2 for international program FTE plan versus actuals for SFU faculties.

**Graph 2: International 2019/20 Program FTEs Planned versus Actual by Faculty**



We admitted **1,613** new international students, **22%** more than the minimum we established in last year's plan. (See Table 2 for 2019/20 Senate Approved Plan for undergraduate international full time equivalent enrolments versus actuals and new intake targets versus actuals by Faculty). A portion of this overage was due to a highly qualified pool of international applicants from B.C. high schools, and post-secondary

transfers. The plan approved by Senate last year allowed for some leeway if we were faced with strong non-FIC applicants.

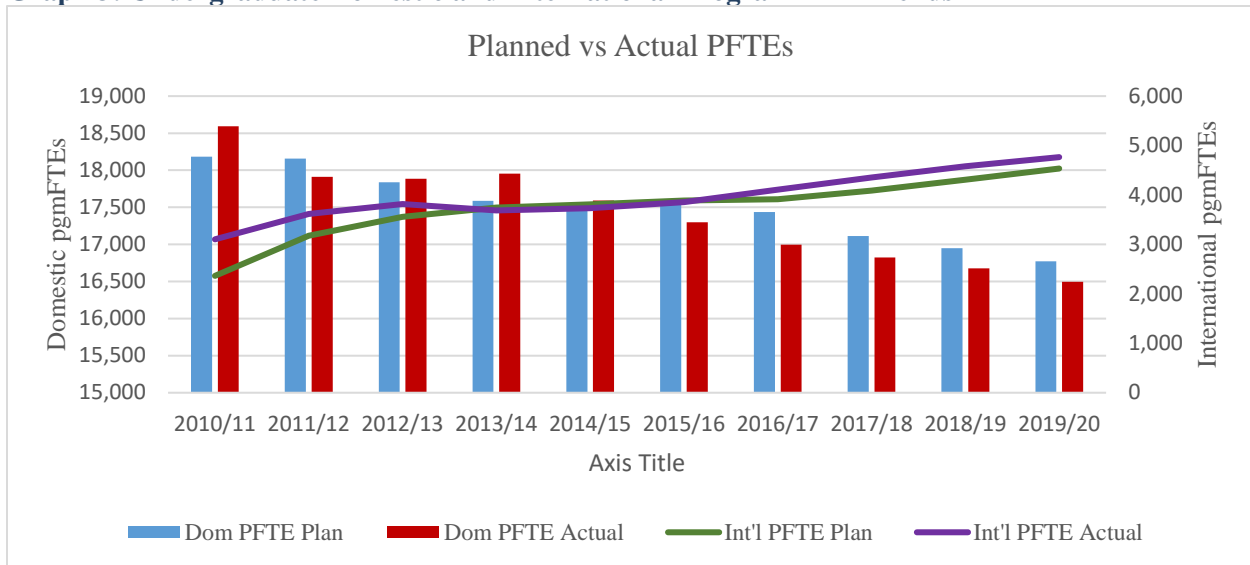
**Table 2: International 2019/20 Enrolments and New Student Intakes by Faculty**

Faculty	Program Full Time Equivalent Enrolments (PFTEs)		New Student Intake (Headcount)	
	Plan	Actual	Plan	Actual
APSC	675	782	181	260
ARTS	1,750	1,803	570	696
BUS	800	827	238	235
FCAT	610	650	153	178
EDUC	30	34	5	4
ENV	200	199	51	91
HSCI	135	146	54	77
SCI	335	323	67	72
USPEC*	0	0	0	0
<b>SFU Total</b>	<b>4,535</b>	<b>4,765</b>	<b>1,319</b>	<b>1,613</b>

\* USPEC= unspecified

**Program FTEs and New Student Intake Trends:** (See Graph 3 and Table 3 for details). Over the past three years, including 2019/20, we have had a very well-qualified pool of international applicants from B.C. high schools and post-secondary institutions, including FIC, resulting in strong international enrolment outcomes. In contrast, over the last few years, we are seeing a softening in the domestic applicant pool. This trend is partly due to the demographics of declining university-aged population in our catchment areas and partially due to increasing competition from teaching- and research-intensive universities. Many other post-secondary institutions across Canada, including those in B.C., are feeling

**Graph 3: Undergraduate Domestic and International Program FTE Trends**



similar challenges in the recruitment of domestic students. We have chosen to maintain our admission standards in the face of this trend. This emphasizes the need to focus on student success and retention

while addressing course access issues, a factor that may be limiting student credit load. Coupled with the recent trend, our long-term enrolment plan has intentionally decreased the excess unfunded by grant domestic PFTEs from 8% down to around 5%. At the same time, we have intentionally increased our international FTEs to offset these declines. Lately, we have been stressing growth in non-traditional demand areas such as FCAT and FENV with some success. Further, due to changes approved by Senate last year, the University was able to increase the number of highly qualified international students admitted from Canadian high schools.

**Table 3: Undergraduate New Intakes and PFTEs Trends (2010/11 – 2019/20)**

	2010/11	2011/12	2012/13	2013/14	2014/15	2015/16	2016/17	2017/18	2018/19	2019/20
<b>New Intakes</b>	<b>Domestic</b>									
Target/Senate Approved	5,465	5,303	5,545	5,472	5,256	5,773	5,813	5,479	5,579	5,414
Actual	5,812	5,186	5,648	5,934	5,437	5,524	5,563	5,213	5,165	4,710
Difference	347	-117	103	462	181	-249	-250	-266	-414	-704
% difference	6.3%	-2.2%	1.9%	8.4%	3.4%	-4.3%	-4.3%	-4.9%	-7.4%	-13.0%
<b>Program FTEs</b>	<b>Domestic</b>									
Dom PFTE Plan	18,185	18,158	17,836	17,587	17,523	17,553	17,438	17,113	16,950	16,773
Dom PFTE Actual	18,593	17,911	17,884	17,955	17,594	17,299	16,995	16,823	16,676	16,498
Difference	408	-247	48	368	71	-254	-443	-290	-274	-275
% difference	2.2%	-1.4%	0.3%	2.1%	0.4%	-1.4%	-2.5%	-1.7%	-1.6%	-1.6%
	<b>International</b>									
<b>New Intakes</b>	2010/11	2011/12	2012/13	2013/14	2014/15	2015/16	2016/17	2017/18	2018/19	2019/20
Target/Senate Approved	507	927	962	1,098	1,587	1,641	1,503	1,303	1,319	1,319
Actual	1,635	1,621	1,124	1,192	1,473	1,499	1,784	1,393	1,699	1,613
Difference	1,128	694	162	94	-114	-142	281	90	380	294
% difference	222.5%	74.9%	16.8%	8.6%	-7.2%	-8.7%	18.7%	6.9%	28.8%	22.3%
<b>Program FTEs</b>	<b>International</b>									
Int'l PFTE Plan	2,364	3,177	3,560	3,748	3,813	3,885	3,916	4,086	4,310	4,535
Int'l PFTE Actual	3,103	3,618	3,819	3,685	3,732	3,854	4,109	4,355	4,579	4,765
Difference	739	441	259	-63	-81	-31	193	269	269	230
% difference	31.3%	13.9%	7.3%	-1.7%	-2.1%	-0.8%	4.9%	6.6%	6.2%	5.1%

## 2020/2021 SFU Enrolment Plan

The Simon Fraser University Enrolment Plan (see Appendix A: Key Tables from the 2020/21 SFU Proposed Enrolment Plan) shows *actual* student enrolments of 2014/15 and 2019/20, proposed *target* enrolments for 2020/21 and extremely preliminary targets for 2025/26. The 2020/21 SFU Enrolment Plan and detailed tables are available at:

<https://www.sfu.ca/irp/enrolments/enrolment-dashboard/restricted/sfu-enrolment-plan-restricted-access-pdf.html>.

### ***SFU's Enrolment Planning Strategy:***

***Undergraduate:*** With respect to undergraduate enrolment, the 2020/21 planned Co-op and non-Co-op undergraduate PFTEs enrolment is proposed to be **17,734** (Section 4p) which would be **3.3%** above the ministry funded program FTE of **17,174**. This goal is intentionally somewhat lower to account for the challenges of implementing the new admission requirements for B.C. secondary school applicants and declining demographics. However, even if we miss this goal we would easily meet our lower level target of 2-3% above the ministry-funded PFTEs.

As shown in the SFU Enrolment Plan, the 2020/21 undergraduate funded program FTE target for domestic students (excluding Co-op FTEs) is **16,338** PFTEs (see section 6p of the SFU Enrolment Plan). The proposed international FTE target (excluding Co-op) for 2020/21 is **4,714** which equates to 22.4% of all undergraduate FTEs (see section 7p of the SFU Enrolment Plan). Based on the university and faculty

enrolment plan, it is estimated that we need to admit **4,958** domestic and **1,491** international new students to meet this enrolment plan. See Table 4 below for a breakdown of the enrolment plan and new intake targets by faculty.

**Table 4: Proposed 2020/21 New Intakes and Program FTEs by Faculty**

Faculty	Program FTE Targets (Plan)		New Intake Targets (Headcount)	
	<u>Domestic</u>	<u>International</u>	<u>Domestic</u>	<u>International</u>
APSC	1,920	785	613	214
ARTS	5,803	1,750	1,973	613
BUS	1,941	800	446	216
FCAT	1,410	650	351	187
EDUC	1,160	33	298	4
ENV	655	200	217	96
HSCI	990	150	305	65
SCI	2,460	345	755	96
<b>SFU Total</b>	<b>16,338</b>	<b>4,714</b>	<b>4,958</b>	<b>1,491</b>

Appendix C provides further details of proposed new domestic and international student intake targets for 2020/21 using the basis of admission categories of Secondary, Post-Secondary and Other.

**Graduate:** The Graduate enrolment plan is established for Regular and Specialty graduate programs. Regular graduate programs generally charge a semester tuition fee, while the Specialty programs generally charge a per credit tuition fee. In 2019/20 SFU received Ministry funding for **2,867** graduate PFTEs (including Co-op and 30 new FTEs for the SEE program) and generated a surplus of 1,012 PFTEs (**35%** above funded target). In contrast to undergraduate enrolments, the ministry does not distinguish between domestic and international students. Due to high demand for graduate programs and being a research intensive university, we are planning for 3,870 PFTEs (excluding Co-op) or 3,783 non Co-op activity FTEs (AFTEs). This breaks down to **2,013** AFTEs (excluding Co-op) for Regular and **1,770** AFTEs (excluding Co-op) for Specialty for 2020/21 (Tables 13a & 14a in Appendix A).



Institutional Research and Planning

**APPENDIX A**

KEY TABLES FROM

2020/21 SFU PROPOSED ENROLMENT PLAN<sup>\*</sup>

For SENATE March 2, 2020

Recommended for Approval by SCEMP, February 13, 2020

SIMON FRASER UNIVERSITY

ENGAGING THE WORLD

\* The full SFU Enrolment Plan is available on this webpage:

<https://www.sfu.ca/irp/enrolments/enrolment-dashboard/restricted/sfu-enrolment-plan-restricted-access-pdf.html>

See: SFU\_Enrollment\_Plan.2020-21.updated.2020.02.11.for.Senate.pdf

**SIMON FRASER UNIVERSITY**  
**2020/21 PROPOSED ENROLMENT PLAN**

LAST UPDATED: Feb/11/2020  
Prepared by: Zareen Naqvi



**UNDERGRADUATE PROGRAM FTE ENROLMENT PLAN**

STUDENT LEVEL/FACULTY		CURRENT YEAR		TARGETS	
		ACTUAL	PLAN		
<b>PROGRAM FTE'S</b>	<b>2014/15</b>	<b>2019/20</b>	<b>2019/20</b>	<b>2020/21</b>	<b>2025/26*</b>
<b>6p. UG DOMESTIC NO COOP (FUNDED)</b>	<b>17,594</b>	<b>16,498</b>	<b>16,773</b>	<b>16,338</b>	<b>16,165</b>
APPLIED SCIENCES	1,784	1,882	1,928	1,920	2,020
ARTS & SOCIAL SCIENCES	6,937	5,983	6,200	5,803	5,668
BUSINESS ADMINISTRATION	1,932	1,950	1,944	1,941	1,901
COMMUNICATION, ART & TECHNOLOGY	1,719	1,477	1,538	1,410	1,376
EDUCATION	1,089	1,150	1,180	1,160	1,140
ENVIRONMENT	597	641	650	655	670
HEALTH SCIENCES	888	945	895	990	981
SCIENCE	2,568	2,462	2,438	2,460	2,408
UNDECL/OPEN LEARNING	80	8	0	0	0

<b>7p. UG INTL NO COOP (UNFUNDED)</b>	<b>3,732</b>	<b>4,765</b>	<b>4,535</b>	<b>4,714</b>	<b>4,843</b>
<b>Intl as % of UG NO COOP</b>	<b>17.5%</b>	<b>22.4%</b>	<b>21.3%</b>	<b>22.4%</b>	<b>23.1%</b>
APPLIED SCIENCES	589	782	675	785	795
ARTS & SOCIAL SCIENCES	1,516	1,803	1,750	1,750	1,810
BUSINESS ADMINISTRATION	803	827	800	800	783
COMMUNICATION, ART & TECHNOLOGY	413	650	610	650	680
EDUCATION	18	34	30	33	37
ENVIRONMENT	82	199	200	200	212
HEALTH SCIENCES	93	146	135	150	162
SCIENCE	217	323	335	345	363
UNDECL/OPEN LEARNING	0	0	0	0	0

\* Extremely preliminary estimates.

UNDECL/OPEN LEARNING = Underclared/unspecified or Open Learning



**SIMON FRASER UNIVERSITY  
2020/21 PROPOSED ENROLMENT PLAN**

**GRADUATE ACTIVITY FTE ENROLMENT PLAN**

STUDENT LEVEL/FACULTY		CURRENT YEAR		TARGETS	
		ACTUAL	PLAN		
ACTIVITY FTE'S	<u>2014/15</u>	<u>2019/20</u>	<u>2019/20</u>	<u>2020/21</u>	<u>2025/26*</u>
<b>13a. GRAD SPECIALTY NO COOP</b>	<b>1,423</b>	<b>1,713</b>	<b>1,748</b>	<b>1,770</b>	<b>1,800</b>
APPLIED SCIENCES	45	160	171	184	214
ARTS & SOCIAL SCIENCES	170	219	201	210	210
BUSINESS ADMINISTRATION	473	645	619	671	671
COMMUNICATION, ART & TECHNOLOGY	54	51	46	51	51
EDUCATION	605	518	597	532	532
ENVIRONMENT	0	24	25	32	32
HEALTH SCIENCES	77	96	89	90	90
SCIENCE	0	0	0	0	0
UNDECL/OPEN LEARNING	0	0	0	0	0

<b>14a. GRAD REGULAR NO COOP</b>	<b>1,845</b>	<b>1,932</b>	<b>1,972</b>	<b>2,013</b>	<b>2,013</b>
APPLIED SCIENCES	284	335	383	358	358
ARTS & SOCIAL SCIENCES	449	463	474	500	500
BUSINESS ADMINISTRATION	15	13	13	16	16
COMMUNICATION, ART & TECHNOLOGY	166	161	175	171	171
EDUCATION	276	316	281	293	293
ENVIRONMENT	160	149	149	160	160
HEALTH SCIENCES	44	49	47	45	45
SCIENCE	450	446	450	469	469
UNDECL/OPEN LEARNING	0	0	0	0	0

\* Extremely preliminary estimates.

UNDECL/OPEN LEARNING = Underclared/unspecified or Open Learning

**SCEMP MEETING ON FEBRUARY 13, 2020**

**Appendix B**

**Table B1. 2019/20 New Domestic Student Intake Targets by Faculty and Basis of Admission - All Campuses (Headcount)**

Faculty	FY1920				Program FTEs	
	SEC	PSEC	OTHER	TOTAL	FY1920	Target
APSC	462	133	46	641	APSC	1,928
FASS	1,517	711	185	2,413	FASS	6,200
BUS	401	77	2	480	BUS	1,944
FCAT	314	95	11	420	FCAT	1,538
EDUC	60	11	160	231	EDUC	1,180
ENV	119	74	6	199	ENV	650
HEALTH	209	65	6	280	HEALTH	895
SCIENCE	505	184	61	750	SCIENCE	2,438
UNIV	3,587	1,350	477	5,414	TOTAL	16,773

Basis of Admission: SEC= Secondary School, PSEC=Post-Secondary transfers, OTHER= All other admission categories

**Table B2. 2019/20 New Domestic Student Intake Estimated Actuals by Faculty and Basis of Admission - All Campuses (Headcount)**

Faculty	FY1920				Program FTEs	
	SEC	PSEC	OTHER	TOTAL	FY1920	Actual
APSC	355	127	54	536	APSC	1,882
FASS	1,060	677	191	1,928	FASS	5,983
BUS	340	84	4	428	BUS	1,950
FCAT	252	76	9	337	FCAT	1,477
EDUC	74	31	194	299	EDUC	1,150
ENV	103	59	4	166	ENV	641
HEALTH	216	76	5	297	HEALTH	945
SCIENCE	519	155	43	717	SCIENCE	2,462
USPEC*	0	3	0	3	USPEC*	8
UNIV	2,919	1,287	504	4,710	TOTAL	16,498

\* USPEC = unspecified

**SCEMP MEETING ON FEBRUARY 13, 2020**

**Table B3. 2019/20 New International Student Intake Targets by Faculty and Basis of Admission - All Campuses (Headcount)**

Faculty	FY1920					Program FTEs	
	SEC	PSEC	FIC	OTHER	TOTAL	FY1920	Target
APSC	8	3	144	26	181	APSC	675
FASS	86	79	386	19	570	FASS	1,750
BUS	68	28	141	1	238	BUS	800
FCAT	10	7	136	0	153	FCAT	610
EDUC	3	2	0	0	5	EDUC	30
ENV	10	8	28	5	51	ENV	200
HEALTH	14	6	34	0	54	HEALTH	135
SCIENCE	32	25	3	7	67	SCIENCE	335
UNIV	231	158	872	58	1,319	TOTAL	4,535

Basis of Admission: SEC= Secondary School, PSEC=Post-Secondary transfers, FIC= Fraser International College transfers & OTHER= All other admission categories

**Table B4. 2019/20 New International Student Intake Estimated Actuals by Faculty and Basis of Admission - All Campuses (Headcount)**

Faculty	FY1920					Program FTEs	
	SEC	PSEC	FIC	OTHER	TOTAL	FY1920	Actual
APSC	25	9	206	20	260	APSC	782
FASS	68	80	544	4	696	FASS	1,803
BUS	56	45	134	0	235	BUS	827
FCAT	22	7	149	0	178	FCAT	650
EDUC	3	0	0	1	4	EDUC	34
ENV	11	12	68	0	91	ENV	199
HEALTH	5	1	71	0	77	HEALTH	146
SCIENCE	37	27	1	7	72	SCIENCE	323
USPEC*	0	0	0	0	0	USPEC*	0
UNIV	227	181	1,173	32	1,613	TOTAL	4,765

\* USPEC = unspecified

**SCEMP MEETING ON FEBRUARY 13, 2020**

**Appendix C**

**Table C1. 2020/21 PROPOSED DOMESTIC Undergraduate Admission Targets by Faculty and Basis of Admission - All Campuses (Headcount)**

Faculty	FY2021			
	SEC	PSEC	OTHER	TOTAL
APSC	412	138	63	613
FASS	1,085	692	196	1,973
BUS	357	85	4	446
FCAT	263	79	9	351
EDUC	73	30	195	298
ENV	134	78	5	217
HEALTH	224	78	3	305
SCIENCE	546	163	46	755
UNIV	3,094	1,343	521	4,958

Program FTEs	
FY2021	Target
APSC	1,920
FASS	5,803
BUS	1,941
FCAT	1,410
EDUC	1,160
ENV	655
HEALTH	990
SCIENCE	2,460
TOTAL	16,338

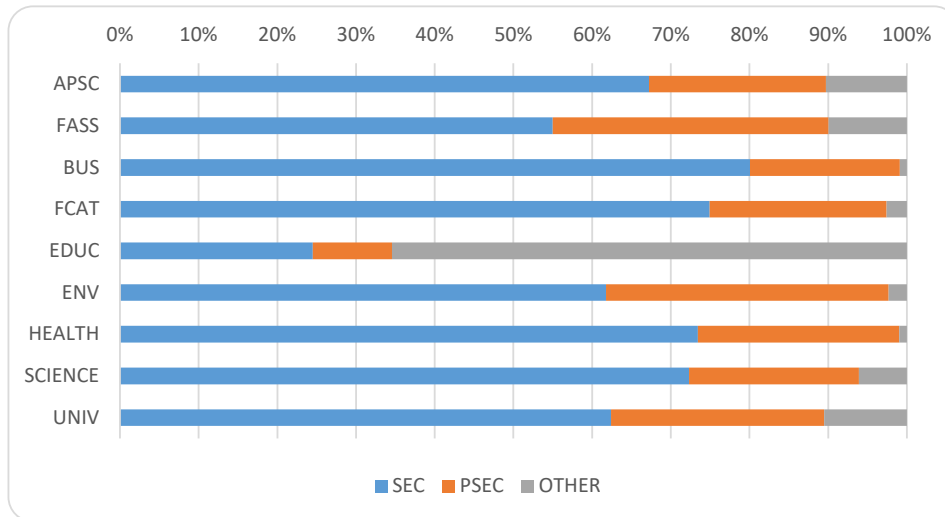
Basis of Admission: SEC= Secondary School, PSEC=Post-Secondary transfers, OTHER= All other admission categories

Note: These new intake targets are contingent on the program FTE (PFTEs) targets. If during the year the PFTE targets are under- or over-achieved, the new intake targets will be re-evaluated with the aim of fulfilling the overall PFTE targets.

For EDUC, the new intake targets include students who are only new to SFU and new to the Faculty of Education.

This Plan includes PDP intake targets of around 350-360 students. Based on recent data we expect 41-42% students to be new to SFU and 58-59% would be SFU students joining the PDP program.

Faculty	FY2021			
	SEC	PSEC	OTHER	%Fac Total
APSC	67%	23%	10%	12%
FASS	55%	35%	10%	40%
BUS	80%	19%	1%	9%
FCAT	75%	23%	3%	7%
EDUC	24%	10%	65%	6%
ENV	62%	36%	2%	4%
HEALTH	73%	26%	1%	6%
SCIENCE	72%	22%	6%	15%
UNIV	62%	27%	11%	100%



**SCEMP MEETING ON FEBRUARY 13, 2020**

**Table C2. 2020/21 PROPOSED INTERNATIONAL Undergraduate Admission Targets by Faculty and Basis of Admission - All Campuses (Headcount)**

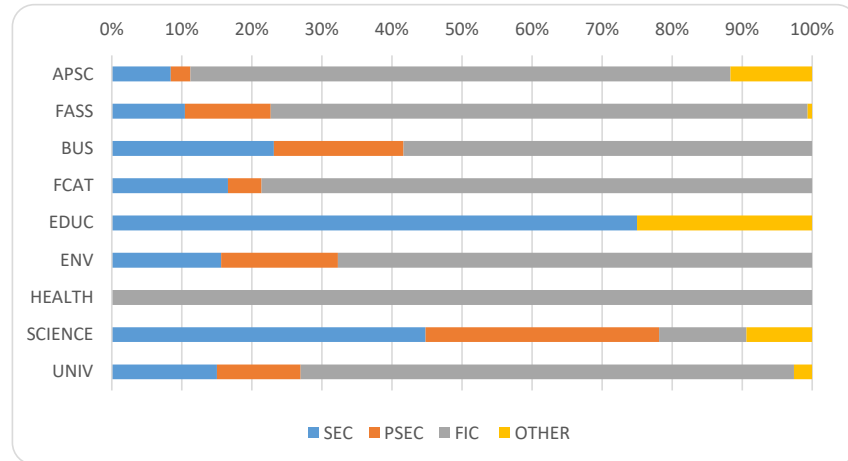
Faculty	FY2021				
	SEC	PSEC	FIC	OTHER	TOTAL
APSC	18	6	165	25	214
FASS	64	75	470	4	613
BUS	50	40	126	0	216
FCAT	31	9	147	0	187
EDUC	3	0	0	1	4
ENV	15	16	65	0	96
HEALTH	0	0	65	0	65
SCIENCE	43	32	12	9	96
UNIV	224	178	1,050	39	1,491

Program FTEs	
FY2021	Target
APSC	785
FASS	1,750
BUS	800
FCAT	650
EDUC	33
ENV	200
HEALTH	150
SCIENCE	345
TOTAL	4,714

Basis of Admission: SEC= Secondary School, PSEC=Post-Secondary transfers, FIC= Fraser International College transfers & OTHER= All other admission categories

Note: Faculties will have the option to exceed their new international student intake target with students who have attended a secondary school in Canada for a minimum of three years including Grade 12 and have achieved an admission average that exceeds the cut-off admission average for domestic students. Decisions will be made by the Registrar and Executive Director Student Enrolment.

Faculty	FY2021				%Fac Total
	SEC	PSEC	FIC	OTHER	
APSC	8%	3%	77%	12%	14%
FASS	10%	12%	77%	1%	41%
BUS	23%	19%	58%	0%	14%
FCAT	17%	5%	79%	0%	13%
EDUC	75%	0%	0%	25%	0%
ENV	16%	17%	68%	0%	6%
HEALTH	0%	0%	100%	0%	4%
SCIENCE	45%	33%	13%	9%	6%
UNIV	15%	12%	70%	3%	100%



GPA Cutoff for New Student Intakes - 2019-2020

Faculty	Domestic							
	Summer 2019		Fall 2019			Spring 2020		
	Secondary School	Post-Secondary Transfer	BC Secondary School***	Secondary School	Post-Secondary Transfer	BC Secondary School***	Secondary School	Post-Secondary Transfer
APSC								
<i>CMPT/SOSY</i>	88%	3.20	84	86%	2.80	84	86%	3.40
<i>ENSC/MSE</i>	88%	3.00	84	86%	2.80	84	86%	2.80
FASS	80%	2.25/2.40**	78	80%	2.25/2.40**	78	80%	2.25/2.40**
BUS	N/A	2.00*	78 + BBA	83% + BBA	2.00*	78 + BBA	83% + BBA	2.00*
FCAT								
<i>CMNS</i>	78%	2.50	78	80%	2.40	78	80%	2.40
<i>SCA</i>	80%	2.50	78	80%	2.40	78	80%	3.00
<i>SIAT</i>	85%	3.50	80	80%	3.50	80	80%	3.50
EDUC	90%	3.00	82	90%	3.50	90	90%	3.50
ENV								
<i>BA/BENV</i>	80%	2.40	78	80%	2.40	78	80%	2.40
<i>BSCEN</i>	80%	2.40	80	80%	2.40	80	80%	2.40
HSCI								
<i>BA</i>	90%	2.60	83	85%	2.60	83	85%	2.60
<i>BSc</i>	90%	2.60	84	85%	2.60	84	85%	2.60
SCI	85%	2.60	84	85%	2.60	84	85%	2.60

Source: Undergraduate Admissions office

\*min 2.00 + GPA on 8 req'd courses

\*\* Univ/College

\*\*\* BC Secondary School applicants evaluated using a weighted average of List A & List B courses

continued....

**GPA Cutoff for New Student Intakes - 2019-2020**

Faculty	International							
	Summer 2019		Fall 2019			Spring 2020		
	Secondary School	Post-Secondary Transfer	BC Secondary School***	Secondary School	Post-Secondary Transfer	BC Secondary School***	Secondary School	Post-Secondary Transfer
APSC								
<i>CMPT/SOSY</i>	95%	4.00	95	95%	4.00	95	95%	4.00
<i>ENSC/MSE</i>	95%	4.00	95	95%	4.00	95	95%	4.00
FASS	95%	3.20	86	86%	3.10	86	86%	4.00
BUS	N/A	2.00*	78 + BBA	83% + BBA	2.00*	78 + BBA	83% + BBA	2.00*
FCAT								
<i>CMNS</i>	95%	4.00	95	95%	4.00	95	95%	4.00
<i>SCA</i>	95%	4.00	95	95%	4.00	95	95%	4.00
<i>SIAT</i>	95%	4.00	95	95%	4.00	95	95%	4.00
EDUC	95%	4.00	95	95%	4.00	95	95%	4.00
ENV								
<i>BA/BENV</i>	95%	2.50	86	86%	3.30	86	86%	3.30
<i>BSCEN</i>	95%	2.50	86	86%	3.30	86	86%	3.30
HSCI								
<i>BA</i>	95%	4.00	95	95%	4.00	95	95%	4.00
<i>BSc</i>	95%	4.00	95	95%	4.00	95	95%	4.00
SCI	95%	2.90	90	90%	3.70	95	95%	3.60

Source: Undergraduate Admissions office

\*min 2.00 + GPA on 8 req'd courses

\*\* Univ/College

\*\*\* BC Secondary School applicants evaluated using a weighted average of List A & List B courses