


SIMON FRASER UNIVERSITY

OFFICE OF THE VICE-PRESIDENT, ACADEMIC

MEMORANDUM

To: Senate

From: D. Gagan, Chair 
Senate Committee on Academic Planning

Subject: International Student Intake Targets

Date: February 11, 1997

The Senate Committee on Enrollment Management and Planning and the Senate Committee on Academic Planning have recommended the following motion for consideration by Senate. Documentation is attached which provides more background information.

Motion:

“That Senate approve and recommend approval to the Board of Governors to limit the number of international students, excluding exchange students, admitted into undergraduate programs at SFU in the academic years 1997/98, 1998/99 and 1999/2000 to a maximum of 7% of all admissions.”

SIMON FRASER UNIVERSITY

MEMORANDUM

TO: Senate Committee on
Academic Planning

FROM: Walter J. Wattamaniuk
Director, Analytical Studies
Secretary to SCEMP

RE: International Student Intake
Targets for 1997/98

DATE: January 29th, 1997

Each year the Senate Committee on Enrollment Management and Planning (SCEMP) is required to make a recommendation to SCAP on the maximum number of international students to be admitted into undergraduate programs for the next calendar year.

For 1996/97, Senate stipulated that the intake of new international students was not to exceed 7% of all admissions. The actual intake was 5.6 % of all admissions. Documentation is attached which provides more background information.

SCEMP met on January 22, 1997 and agreed that no change was required to last year's policy. The following motion has been prepared for SCAP's approval.

Motion

"That SCAP approve and recommend approval to Senate and the Board to limit the number of international students admitted into undergraduate programs at SFU in 1997/98 to a maximum of 7% of all admissions."

Attach.



INTERNATIONAL UNDERGRADUATE STUDENT REGISTRATIONS AT SFU

<u>Sem/AcadYear</u>	<u>NEW REGISTRANTS</u>			<u>ALL REGISTRANTS</u>		
	<u>Visa</u>	<u>All</u>	<u>%</u>	<u>Visa</u>	<u>All</u>	<u>%</u>
	<u>Students</u>	<u>Students</u>	<u>Visa</u>	<u>Students</u>	<u>Students</u>	<u>Visa</u>
<u>1988/89</u>						
88-2	76	711	10.7%	559	6,756	8.3%
88-3	122	2,866	4.3%	697	12,693	5.5%
89-1	69	1,053	6.6%	674	12,359	5.5%
Total	267	4,630	5.8%	1,930	31,808	6.1%
<u>1989/90</u>						
89-2	73	805	9.1%	550	7,331	7.5%
89-3	138	3,679	3.8%	713	14,323	5.0%
90-1	85	1,302	6.5%	706	14,096	5.0%
Total	296	5,786	5.1%	1,969	35,750	5.5%
<u>1990/91</u>						
90-2	94	748	12.6%	596	7,972	7.5%
90-3	157	2,985	5.3%	755	14,551	5.2%
91-1	140	1,472	9.5%	813	14,613	5.6%
Total	391	5,205	7.5%	2,164	37,136	5.8%
<u>1991/92</u>						
91-2	126	1,008	12.5%	721	9,015	8.0%
91-3	122	2,794	4.4%	819	15,299	5.4%
92-1	106	788	13.5%	858	14,370	6.0%
Total	354	4,590	7.7%	2,398	38,684	6.2%
<u>1992/93</u>						
92-2	89	770	11.6%	702	8,505	8.3%
92-3	115	2,935	3.9%	815	15,239	5.3%
93-1	43	458	9.4%	744	14,148	5.3%
Total	247	4,163	5.9%	2,261	37,892	6.0%
<u>1993/94</u>						
93-2	68	919	7.4%	627	8,828	7.1%
93-3	98	2,663	3.7%	675	14,841	4.5%
94-1	77	1,436	5.4%	662	14,864	4.5%
Total	243	5,018	4.8%	1,964	38,533	5.1%
<u>1994/95</u>						
94-2	76	1,181	6.4%	530	8,957	5.9%
94-3	126	3,241	3.9%	609	15,931	3.8%
95-1	64	1,387	4.6%	601	15,741	3.8%
Total	266	5,809	4.6%	1,740	40,629	4.3%
<u>1995/96</u>						
95-2	37	653	5.7%	450	9,294	4.8%
95-3	119	3,113	3.8%	529	15,982	3.3%
96-1	68	977	7.0%	505	15,492	3.3%
Total	224	4,743	4.7%	1,484	40,768	3.6%
<u>1996/97</u>						
96-2	50	782	6.4%	362	9,275	3.9%
96-3	172	3,550	4.8%	525	16,550	3.2%
97-1	59	682	8.7%	470	15,469	3.0%
Total	281	5,014	5.6%	1,357	41,294	3.3%

NOTE: Starting in 1995-1, the counts contain international students with visa status "visa student", "diplomatic" and "visiting". Prior to 1995-1, only "visa student" counts were included.

SOURC SSC8000, SSC6400

REVISED: Jan 29, 1997

**SIMON FRASER UNIVERSITY
OFFICE OF ANALYTICAL STUDIES
MEMORANDUM**

TO: See Distribution List

FROM: Joanne Heslop, Analyst

SUBJECT: Visa Students, Fall 1996

DATE: October 24, 1996

Enclosed is the Fall 1996 report on visa students at Simon Fraser University. This report includes international students on student, diplomatic and visitor visas. Note that countries which currently represent at least 1.0% of the international student population are shown in this report. All other countries are included under 'other'.

At the undergraduate level, 525 visa students registered at SFU this Fall. This represents 3.2% of the undergraduate student population and a 0.8% decrease over last Fall. Approximately 40% of the undergraduate international student population comes from two countries: Hong Kong (24.8%) and Singapore (14.7%).

Approximately 57% of all undergraduate visa students studying at SFU were originally admitted to SFU from a B.C. secondary or post-secondary institution.

In looking at the top five countries, Singapore and Hong Kong show decreases of 29% and 16% over last Fall. Three countries show increases: United Kingdom (93%), Indonesia (33%), and Taiwan (27%). See Figure 1 for the ten year trend in these top five countries.

At the graduate level, 328 visa students registered at SFU, a 3.0% decrease over last Fall. Graduate visa students make up 13.4% of the graduate population.

Approximately 38% of the international graduate student population comes from two countries: The People's Republic of China (24.4%) and the United States (13.4%). Refer to Figure 2 for the ten year trend of international graduate students for the current top five countries.

Please contact me at 4525 if there are any questions pertaining to the enclosed.

Enclosure

Distribution List:

John Stubbs, President
David Gagan, Vice-President, Academic
Roger Ward, Vice-President, Finance and Administration
Gregg MacDonald, Executive Director, External Relations
Joe Knockaert, Director, International Cooperation
Ron Heath, Registrar and Dean of Student Services
Judith Osborne, Associate Vice-President, Academic
Bruce Clayman, Dean of Graduate Studies
Randall Martin, Director, International Education
Kathy Heinrich, Academic Planning, Special Assistant
Walt Wattamaniuk, Director, Analytical Studies



SIMON FRASER UNIVERSITY
INTERNATIONAL VISA STUDENTS - BY COUNTRY OF CITIZENSHIP

TABLE 1: UNDERGRADUATE INTERNATIONAL VISA STUDENTS

<u>COUNTRY</u>	<u>1987</u>	<u>1988</u>	<u>1989</u>	<u>1990</u>	<u>1991</u>	<u>1992</u>	<u>1993</u>	<u>1994</u>	<u>1995</u>	<u>1996</u>	<u>1996</u> <u>% of Total</u>	<u>1996</u> <u>Cum %</u>
Hong Kong	244	251	249	257	282	291	236	199	154	130	24.8%	24.8%
Singapore	135	142	151	173	205	224	173	132	109	77	14.7%	39.4%
United Kingdom	6	10	15	11	12	9	14	17	15	29	5.5%	45.0%
Indonesia	17	21	19	24	30	21	20	19	21	28	5.3%	50.3%
Taiwan	5	7	12	13	15	17	12	19	22	28	5.3%	55.6%
Japan	6	7	10	9	10	20	16	31	28	26	5.0%	60.6%
United States	32	32	26	27	23	17	20	24	22	26	5.0%	65.5%
Germany	9	9	12	15	14	16	21	22	23	22	4.2%	69.7%
Malaysia	66	70	77	78	84	68	53	30	28	20	3.8%	73.5%
China (PRC)	19	19	25	29	19	20	13	12	15	14	2.7%	76.2%
Mexico	2	2	2	2	1	4	4	8	5	14	2.7%	78.9%
Phillippines	4	6	3	1	0	2	3	2	1	10	1.9%	80.8%
India	5	6	7	7	10	9	8	5	5	9	1.7%	82.5%
Norway	15	17	12	7	7	6	3	4	7	9	1.7%	84.2%
South Korea	0	0	0	1	3	4	5	7	7	8	1.5%	85.7%
Iran	6	6	4	6	2	1	1	2	4	6	1.1%	86.9%
Switzerland	5	3	1	2	2	2	2	5	5	6	1.1%	88.0%
Other	94	89	88	93	100	84	71	71	58	63	12.0%	100.0%
Total Visa	670	697	713	755	819	815	675	609	529	525	100.0%	
Total Undergrad	12,404	12,693	14,323	14,551	15,299	15,239	14,841	15,931	15,982	16,550		
% Visa	5.4%	5.5%	5.0%	5.2%	5.4%	5.3%	4.5%	3.8%	3.3%	3.2%		

TABLE 2: GRADUATE INTERNATIONAL VISA STUDENTS

<u>COUNTRY</u>	<u>1987</u>	<u>1988</u>	<u>1989</u>	<u>1990</u>	<u>1991</u>	<u>1992</u>	<u>1993</u>	<u>1994</u>	<u>1995</u>	<u>1996</u>	<u>1996</u> <u>% of Total</u>	<u>1996</u> <u>Cum %</u>
China (PRC)	61	92	119	136	113	87	78	75	75	80	24.4%	24.4%
United States	21	20	25	29	37	42	34	38	41	44	13.4%	37.8%
Germany	3	4	5	4	10	13	21	20	22	21	6.4%	44.2%
India	21	19	16	21	26	28	27	28	19	15	4.6%	48.8%
Vietnam	0	0	0	0	0	0	1	9	15	15	4.6%	53.4%
Indonesia	29	24	13	10	13	12	11	12	14	11	3.4%	56.7%
United Kingdom	17	14	13	15	29	26	19	16	13	9	2.7%	59.5%
Hong Kong	18	18	19	17	13	15	14	13	12	9	2.7%	62.2%
Japan	1	5	4	4	6	7	4	6	8	9	2.7%	64.9%
Malaysia	7	6	5	6	4	5	3	5	6	6	1.8%	66.8%
Singapore	3	3	0	3	7	7	5	5	6	5	1.5%	68.3%
Denmark	0	0	0	1	1	2	2	3	4	5	1.5%	69.8%
Thailand	1	2	1	0	2	2	1	2	4	5	1.5%	71.3%
Czechoslovakia	0	0	0	0	5	3	5	2	3	5	1.5%	72.9%
Mexico	1	1	4	4	5	3	3	2	2	5	1.5%	74.4%
Other	96	86	75	100	124	125	117	98	94	84	25.6%	100.0%
Total Visa	279	294	299	350	395	377	345	334	338	328	100.0%	
Total Grad	1,494	1,546	1,600	1,739	2,036	2,174	2,261	2,321	2,431	2,450		
% Visa	18.7%	19.0%	18.7%	20.1%	19.4%	17.3%	15.3%	14.4%	13.9%	13.4%		

Notes:

1. Includes international students registered in the Fall semester on student, diplomatic or visitor visas.
2. Individual countries with fewer than 1.0% of the international undergraduate/graduate visa student population are included in "Other".

SOURCE: SSC6400

SIMON FRASER UNIVERSITY
INTERNATIONAL VISA STUDENTS - BY COUNTRY OF CITIZENSHIP

FIGURE 1: UNDERGRADUATES

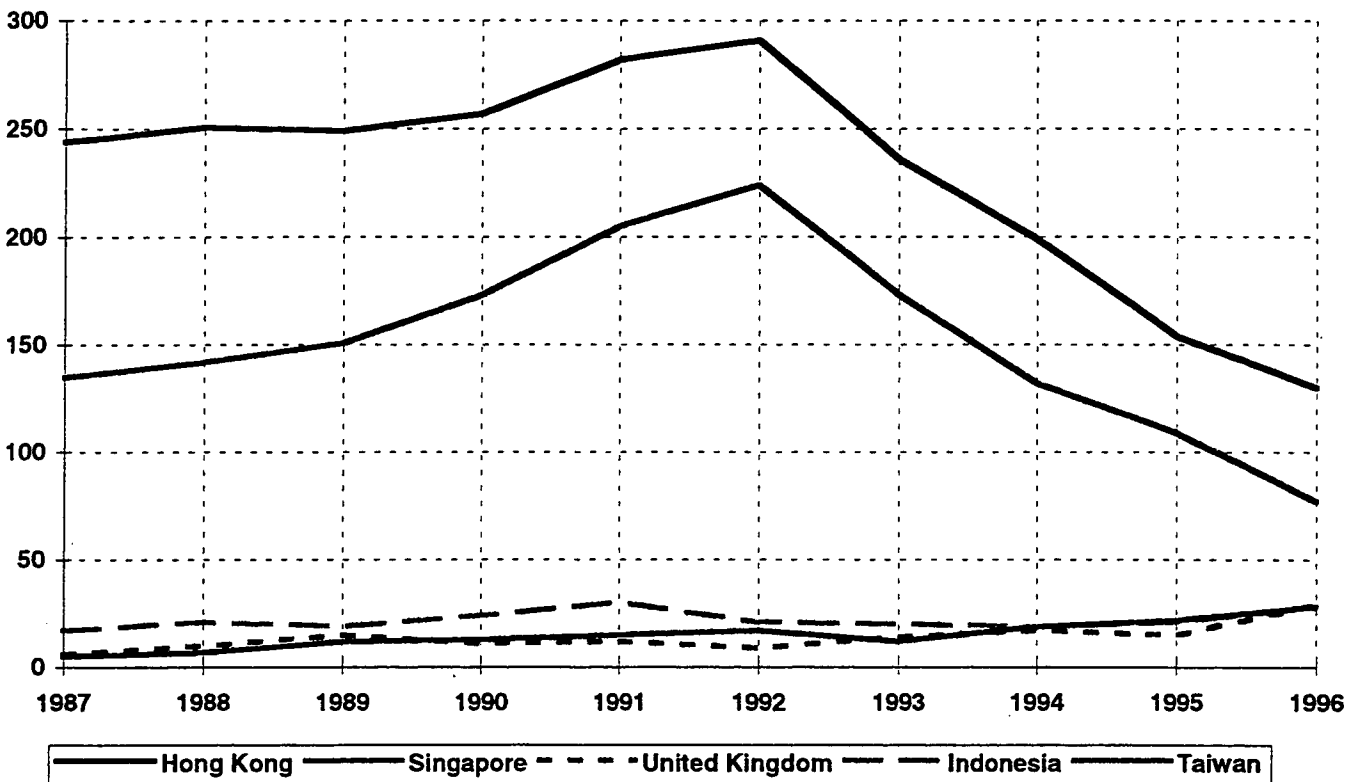


FIGURE 2: GRADUATES

